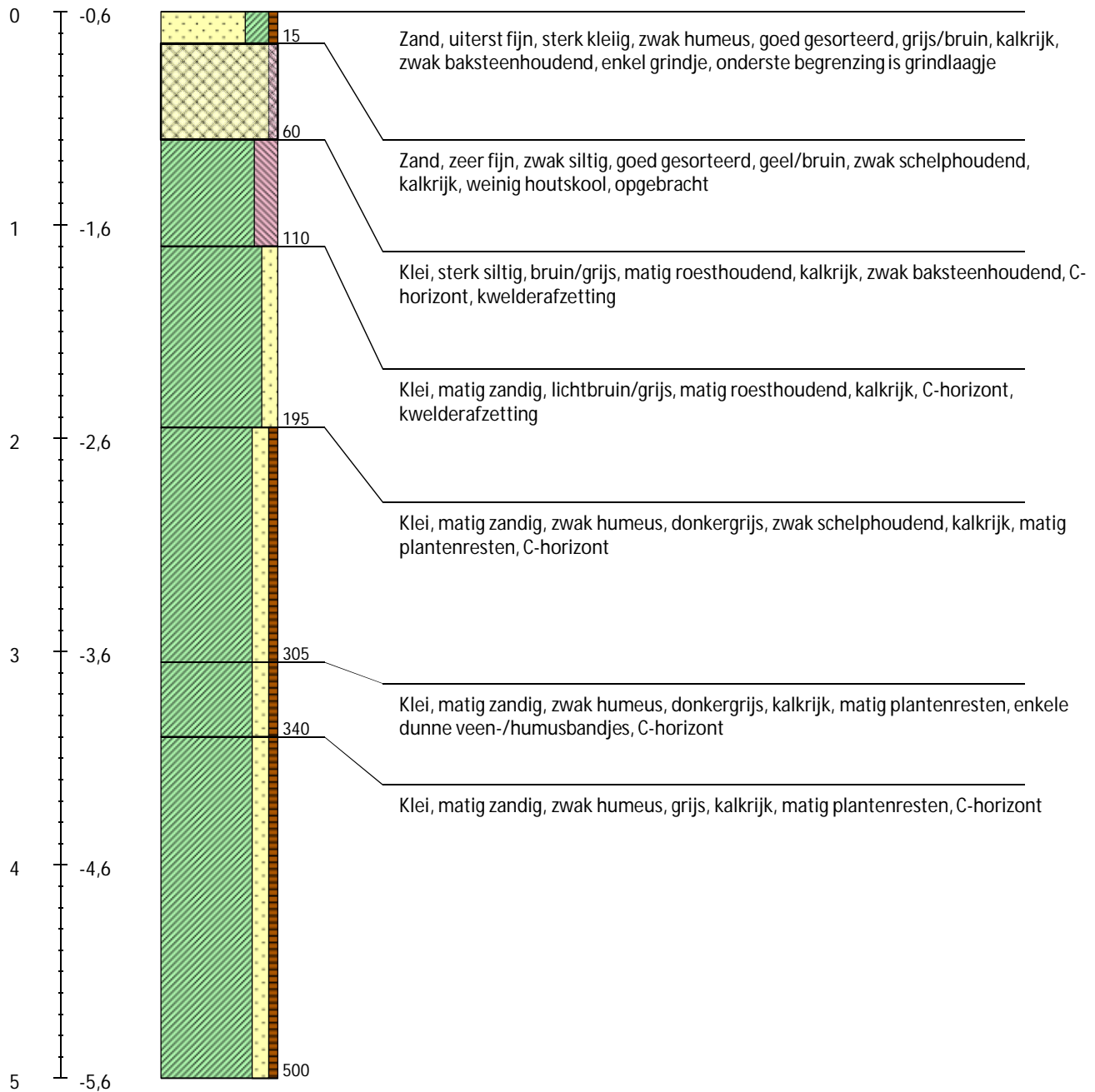
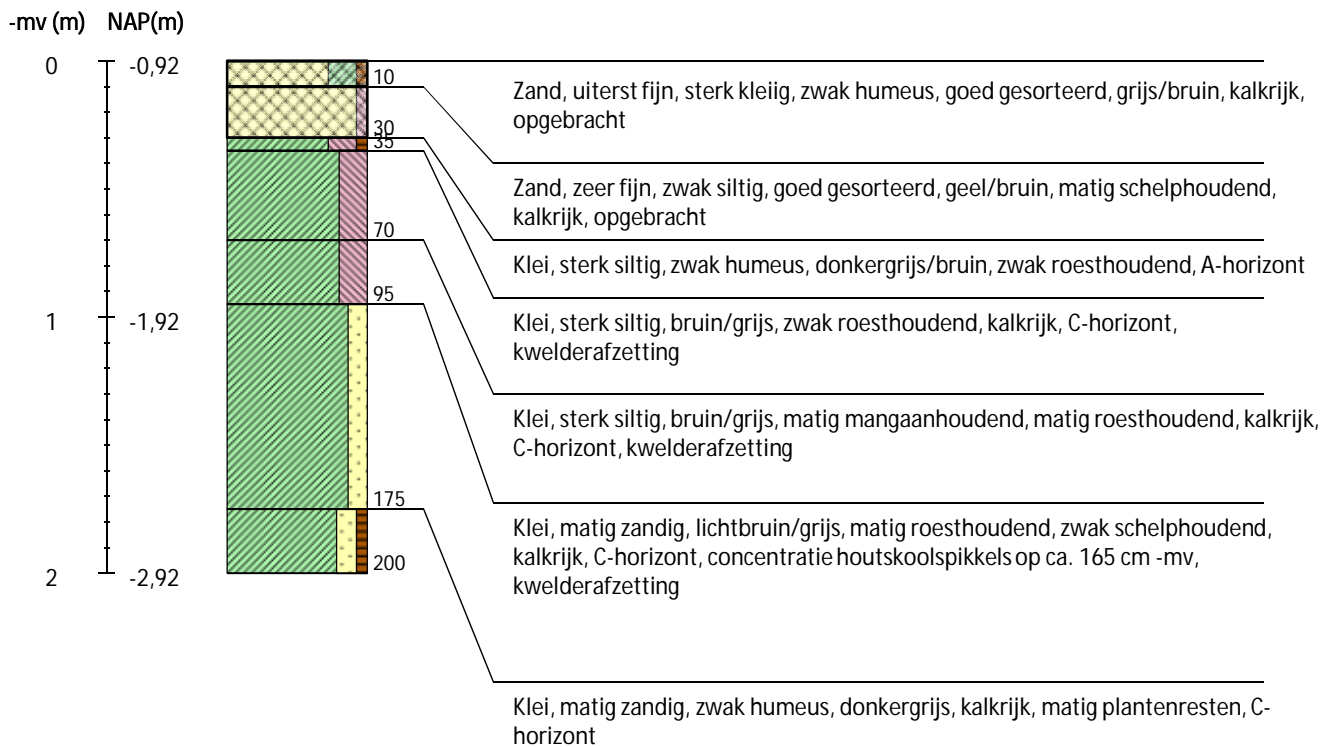


Boring 1 RD-coördinaten: 78827/436362

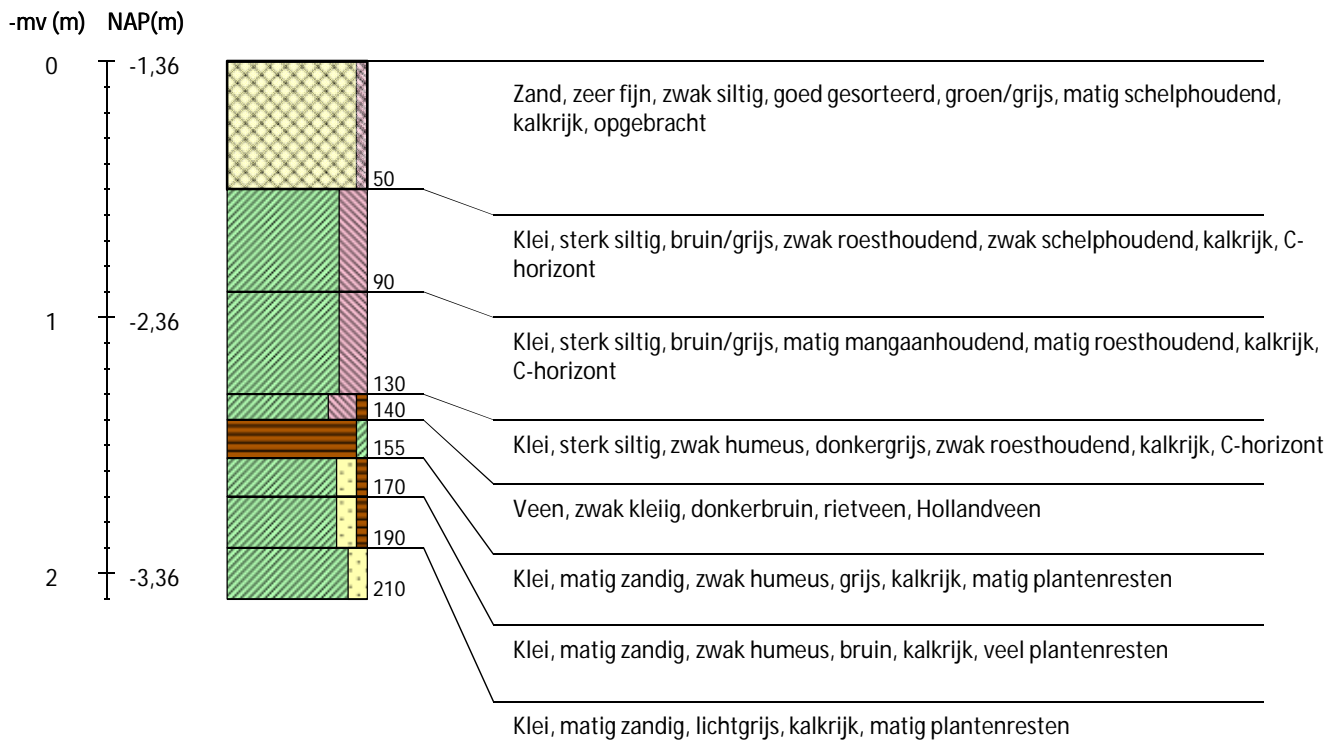
-mv (m) NAP(m)



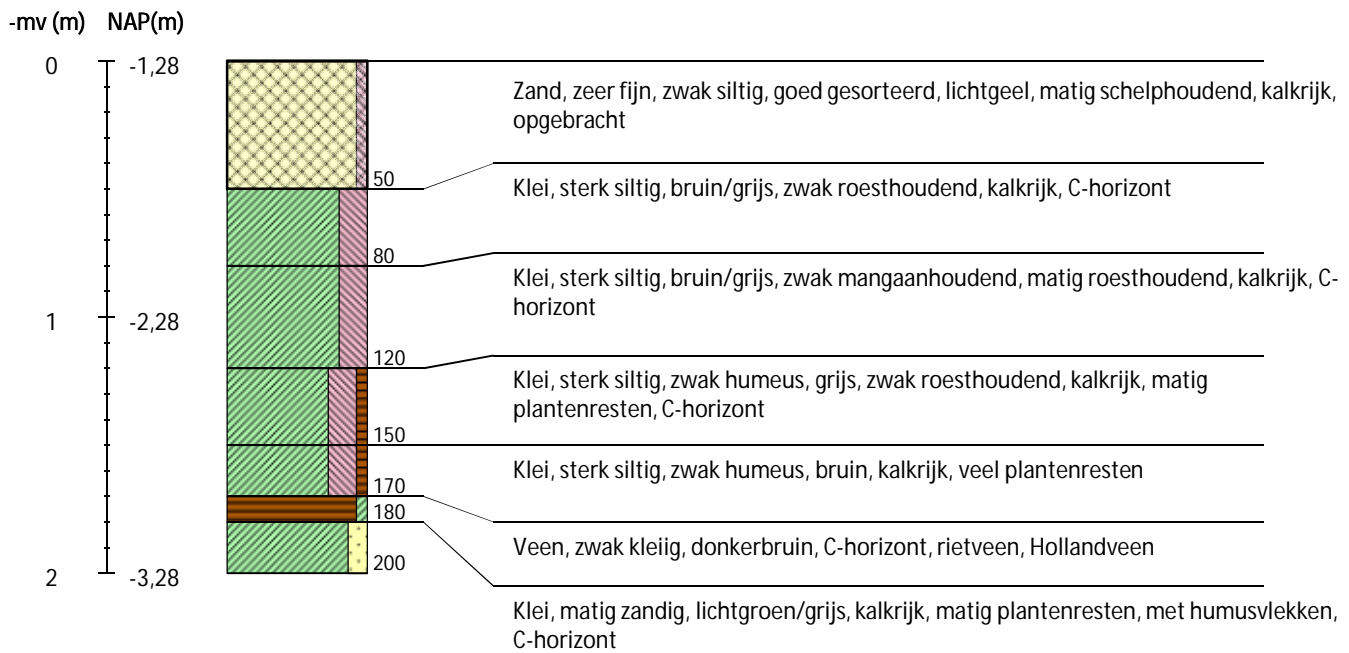
Boring 2 RD-coördinaten: 78835/436359



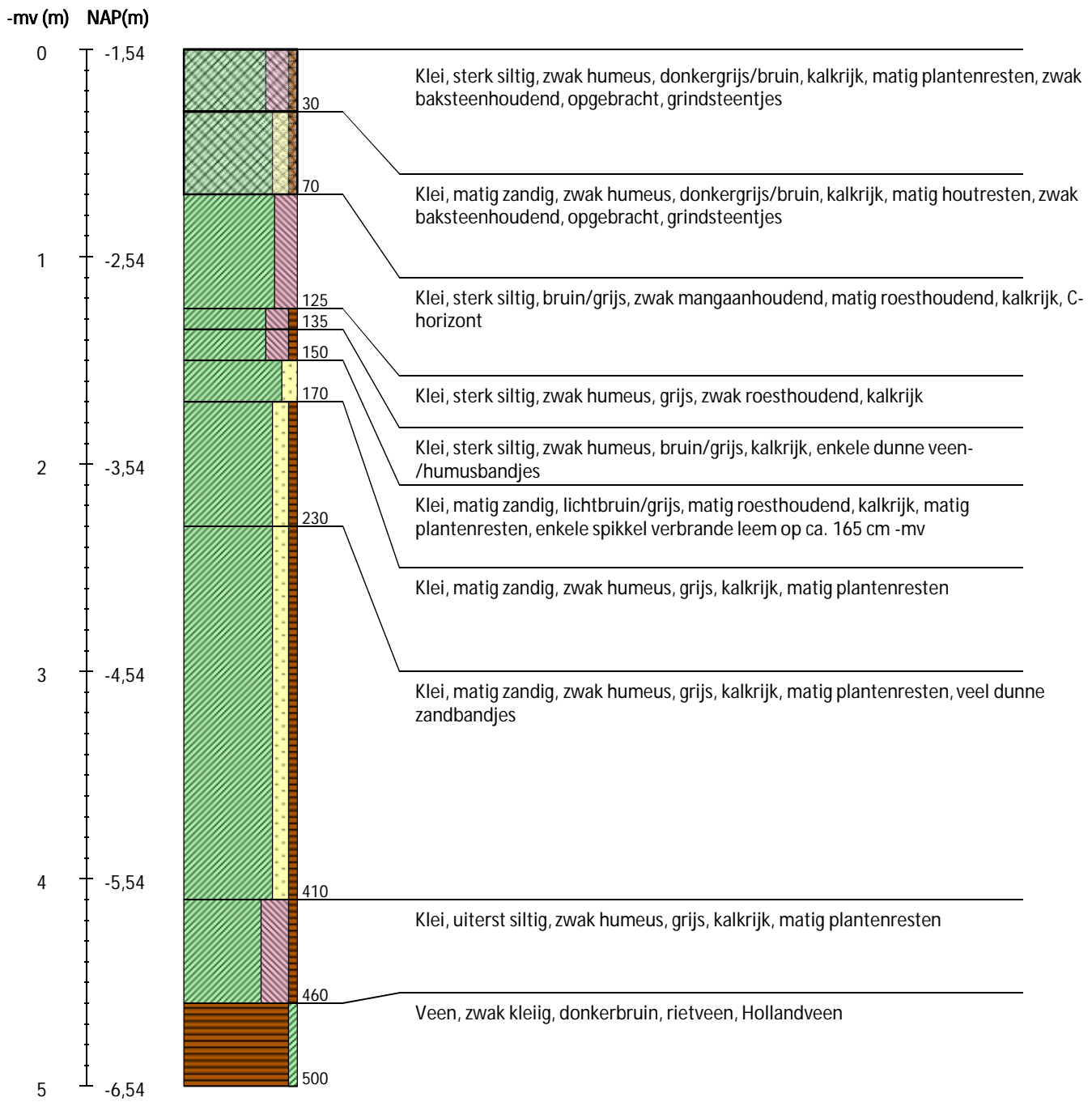
Boring 3 RD-coördinaten: 78842/436356



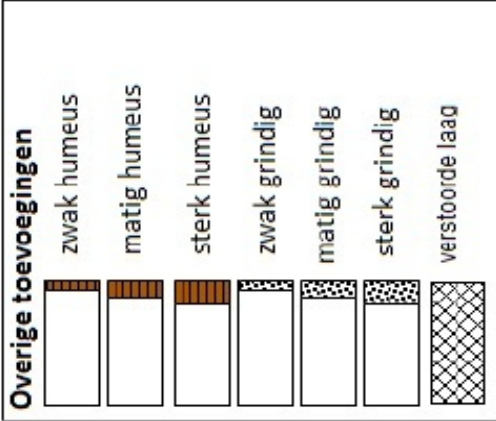
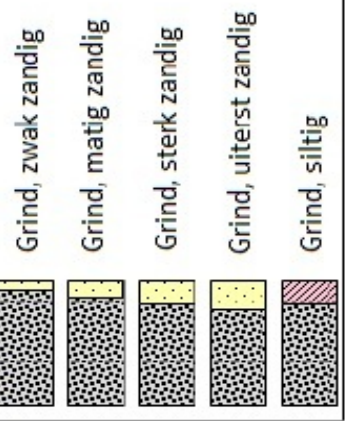
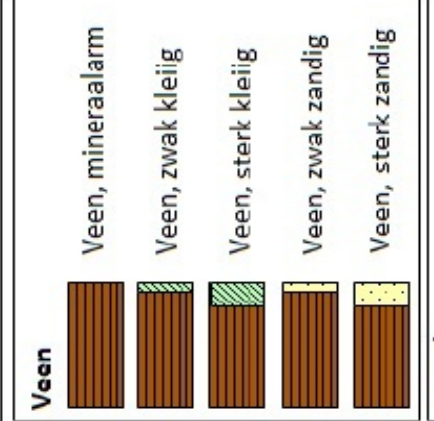
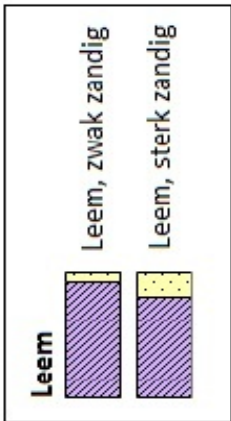
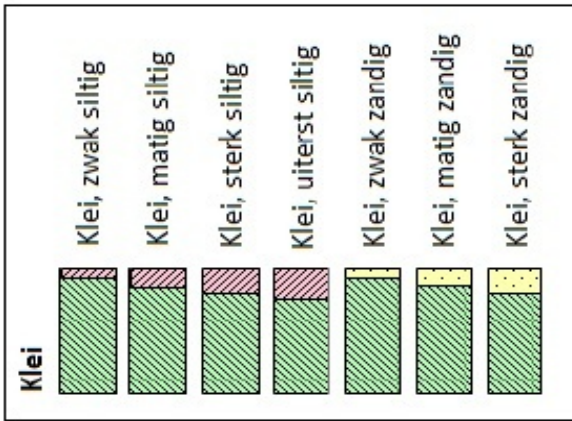
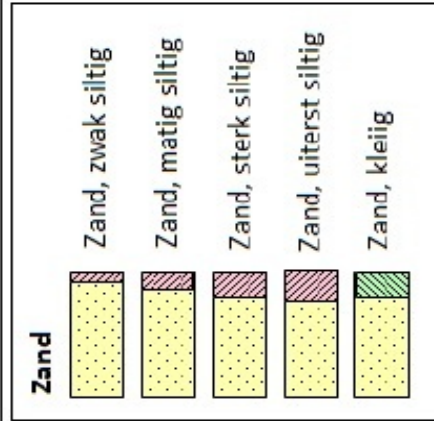
Boring 4 RD-coördinaten: 78850/436353



Boring 5 RD-coördinaten: 78858/436350



**Legenda (conform NEN 5104, boorbeschrijvingsnorm van NITG-TNO en ASB)**



**Zandmediaan**

uiterst fijn	< 105	µm
zeer fijn	105 - < 150	µm
matig fijn	150 - < 210	µm
matig grof	210 - < 300	µm
zeer grof	300 - < 420	µm
uiterst grof	420 - < 2000	µm

**Zandsortering**

goed gesorteerd	D60/D10 < 1,8
matig gesorteerd	D60/D10 1,8 < 3
slecht gesorteerd	D60/D10 > 3

**Kalkgehalte**

kalkloos	geen opbruising minder dan 0,5% CaCO <sub>3</sub>
kalkarm	hoorbare opbruising, circa 0,5 - 1 à 2 % CaCO <sub>3</sub>
kalkrijk	zichtbare opbruising, 1 à 2% CaCO <sub>3</sub>

**Begrenzing onderliggende laag**

scherp	overgangsgebied < 0,3 cm
onscherp	overgangsgebied 0,3 - < 3 cm
diffuus	overgangsgebied 3 cm - < 10 cm

**Inclusies/archeologische indicatoren**

weinig	< 1%
matig	1-10%
veel	> 10%